

55 Thayer Street
Boston, MA 02118
617.728.0770

[home and current show](#) | [upcoming exhibition](#) | [past exhibitions](#) | [artists](#) | [contact us](#) | [about us](#) | [directions](#) | [BACK](#)

current exhibition

Leslie Parke

Particle/Wave

Exhibition dates: September 1st to October 1st

Artist's Reception is Friday, September 9th, 5:30 PM to 7:30 PM

we'll be open on the evening of September 2nd for the 1st Friday

[Leslie Parke short bio](#)

[Download Artist C.V.](#)

Click on image to view larger.



Drift
archival print
on watercolor paper
34" x 25.5", 2016



Stone Surface
archival print
on watercolor paper
34" x 34", 2016



Fence - light
archival print
on watercolor paper
34" x 19", 2016



Blue Column
archival print
on watercolor paper
34" x 25.5", 2016



Mountain Flow
archival print
on watercolor paper
22.5" x 34", 2016



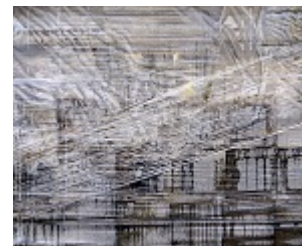
Ocean at Dawn
archival print
on watercolor paper
18" x 18", 2016



Particle Wave
archival print
on watercolor paper
22.5" x 34", 2016



Reach
archival print
on watercolor paper
25.5" x 34", 2016





Smearred Window
archival print
on watercolor paper
34" x 25.5", 2016

Stacked
archival print
on watercolor paper
22.5" x 34", 2016

Taut
archival print
on watercolor paper
25.5" x 34", 2016



Trace
archival print
on watercolor paper
34" x 25.5", 2016



Fence with Bubbles
archival print
on watercolor paper
26" x 34", 2015



Field
archival print
on watercolor paper
34" x 22.5", 2016



Golf Juan I
archival print
on watercolor paper
22.5" x 34", 2016



Golf Juan II
archival print
on watercolor paper
22.5" x 34", 2016

Privacy by  SafeSubscribeSM

Soprafina Gallery | 55 Thayer Street | Boston, MA 02118 | 617.728.0770 | info@soprafina.com